



34T Pulley set --X 1

BAG
I



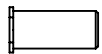
5x8x2.5mm bearing --X 2



M3x6mm_buttonhead --X 1



M3x8mm_buttonhead --X 1

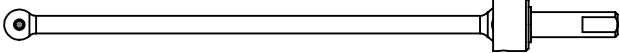
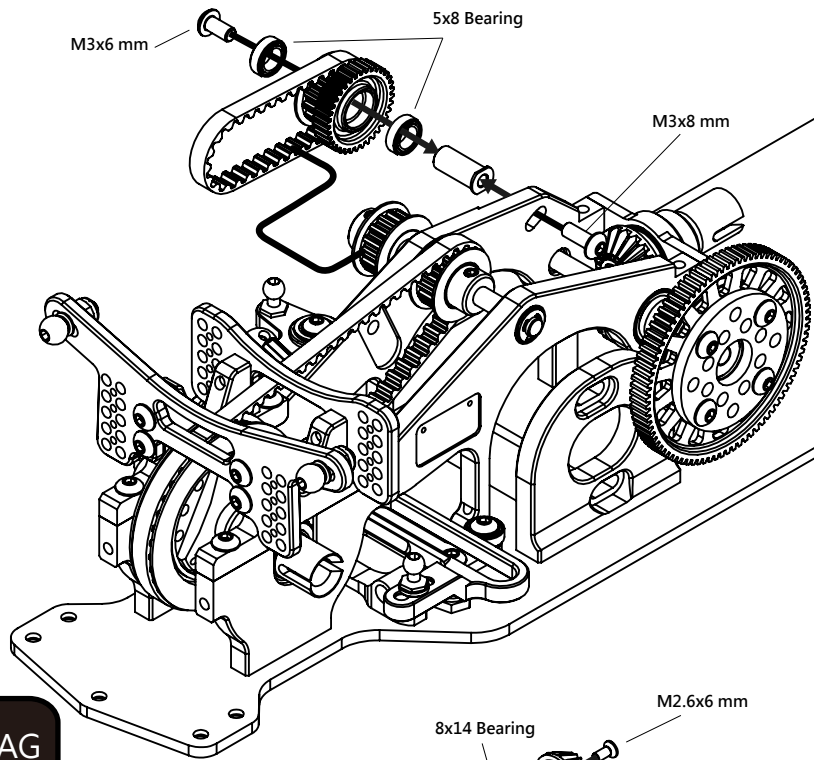


Idler shaft_01 --X 1



102mm Belt

--X 1



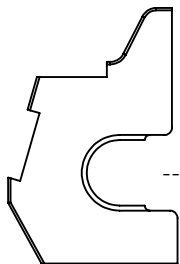
Center shaft --X 1

BAG
J

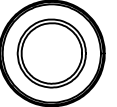


5x10x4mm bearing --X 1

--X 1



Rear bulkhead R



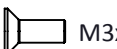
8x14x4mm bearing --X 1



M2.6x6mm_flathead --X 1



M3x6mm_buttonhead --X 2

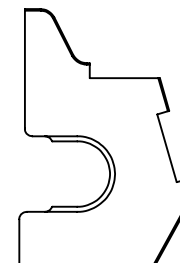


M3x8mm_flathead --X 4



--X 1

Bevel gear housing_02



Rear bulkhead L



17T Bevel gear --X 1

